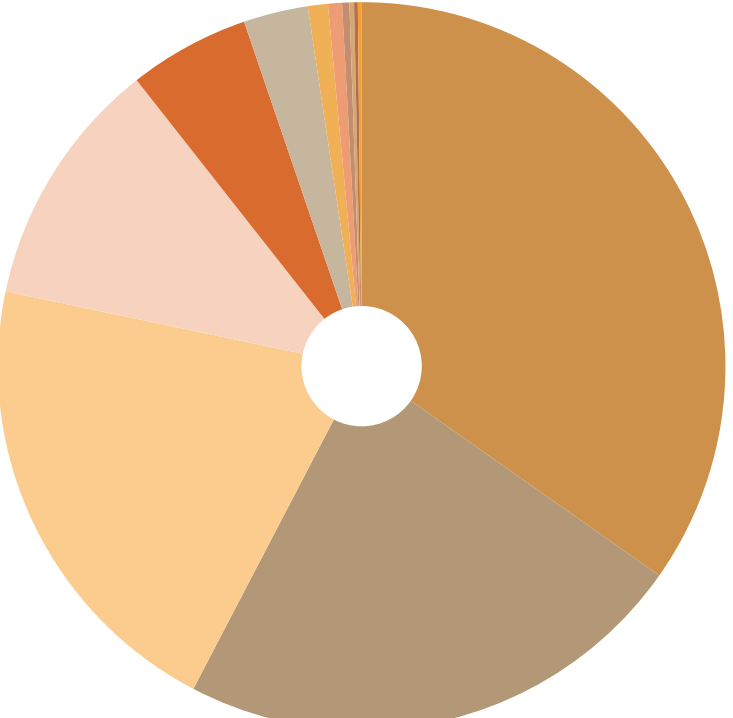
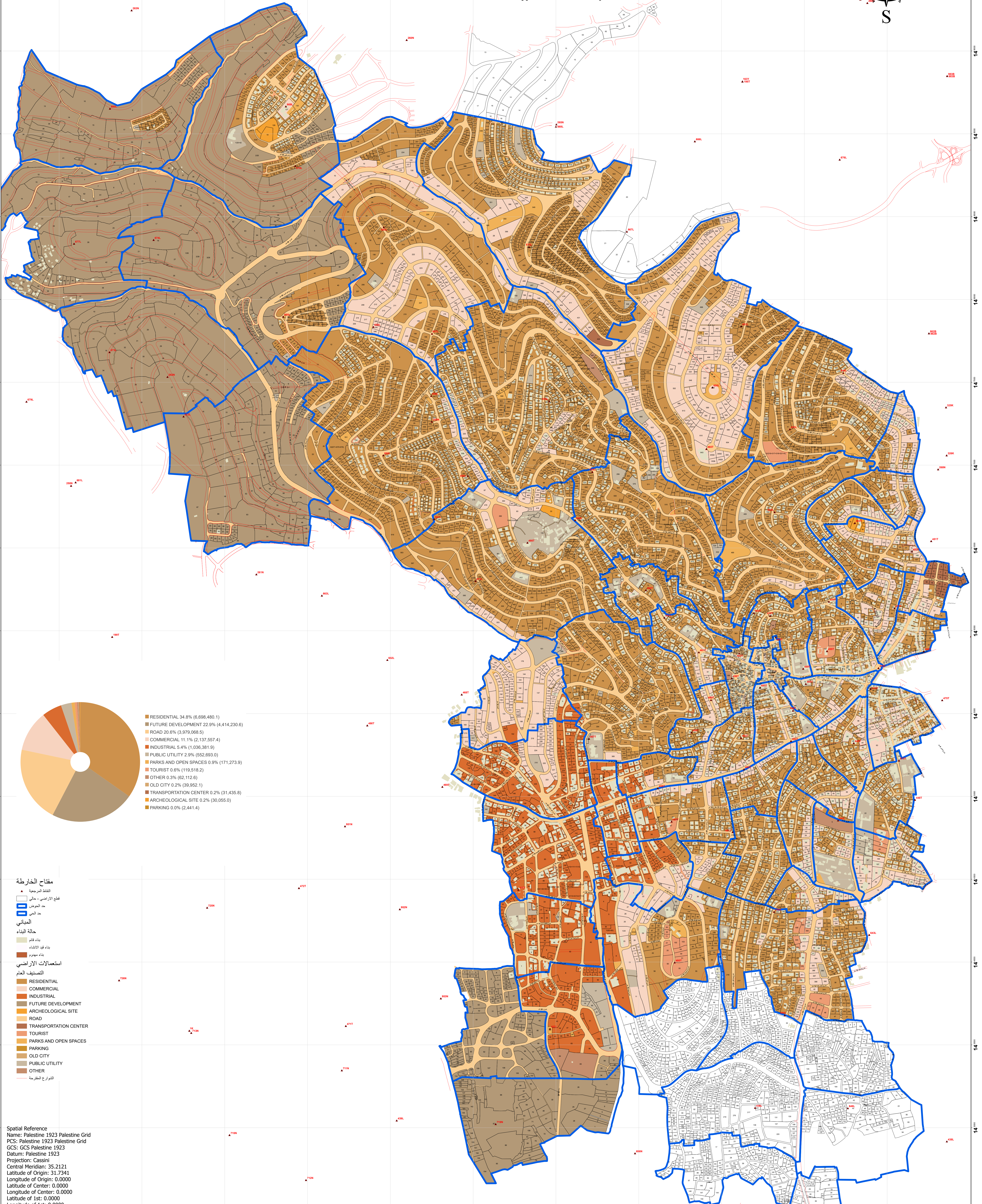
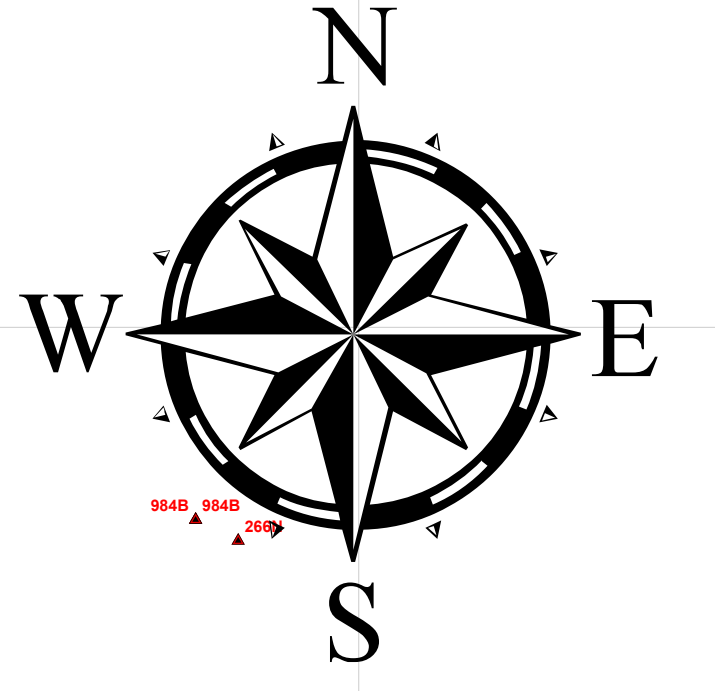


المخطط الهيكل لمدينة رام الله 2023

حسب التصنيفات العامة



Category	Percentage	Area (sq.m)
RESIDENTIAL	34.8%	(6,698,480.1)
FUTURE DEVELOPMENT	22.9%	(4,414,230.6)
ROAD	20.6%	(3,979,068.5)
COMMERCIAL	11.1%	(2,137,557.4)
INDUSTRIAL	5.4%	(1,036,381.9)
PUBLIC UTILITY	2.9%	(552,693.0)
PARKS AND OPEN SPACES	0.9%	(171,273.9)
TOURIST	0.6%	(119,518.2)
OTHER	0.3%	(62,112.6)
OLD CITY	0.2%	(39,952.1)
TRANSPORTATION CENTER	0.2%	(31,435.8)
ARCHEOLOGICAL SITE	0.2%	(30,055.0)
PARKING	0.0%	(2,441.4)

- مفتاح الخريطة**
- القطر المرجعية
 - قطع الأراضي - حالي
 - حد النواحي
 - حد المدينة
 - المباني**
 - حالة البناء
 - بناء قديم
 - بناء قيد الإنشاء
 - بناء مقوم
 - الاستعمالات الأرضية**
 - التصنيف العام
 - RESIDENTIAL
 - COMMERCIAL
 - INDUSTRIAL
 - FUTURE DEVELOPMENT
 - ARCHEOLOGICAL SITE
 - ROAD
 - TRANSPORTATION CENTER
 - TOURIST
 - PARKS AND OPEN SPACES
 - PARKING
 - OLD CITY
 - PUBLIC UTILITY
 - OTHER
 - الشوارع المقترحة

Spatial Reference
Name: Palestine 1923 Palestine Grid
PCS: Palestine 1923 Palestine Grid
GCS: GCS Palestine 1923
Datum: Palestine 1923
Projection: Cassini
Central Meridian: 35.2121
Latitude of Origin: 31.7341
Longitude of Origin: 0.0000
Latitude of Center: 0.0000
Longitude of Center: 0.0000
Latitude of 1st: 0.0000
Longitude of 1st: 0.0000
Latitude of 2nd: 0.0000
Longitude of 2nd: 0.0000
False Easting: 170,251.5550
False Northing: 126,867.9090
Central Parallel: 0.0000
Standard Parallel: 0.0000
Standard Parallel 2: 0.0000
Scale Factor: 1.0000
Azimuth: 0.0000
Page units: Meter

